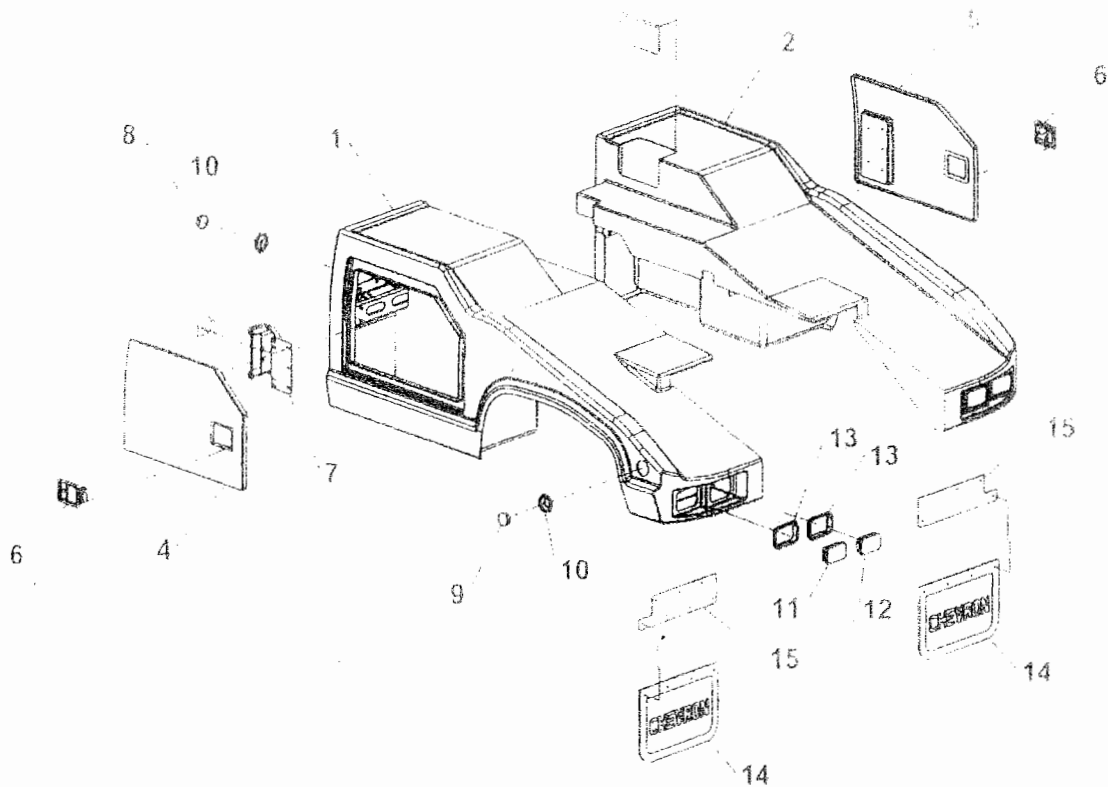




**OUTLAW
SERIES
PARTS
MANUAL**

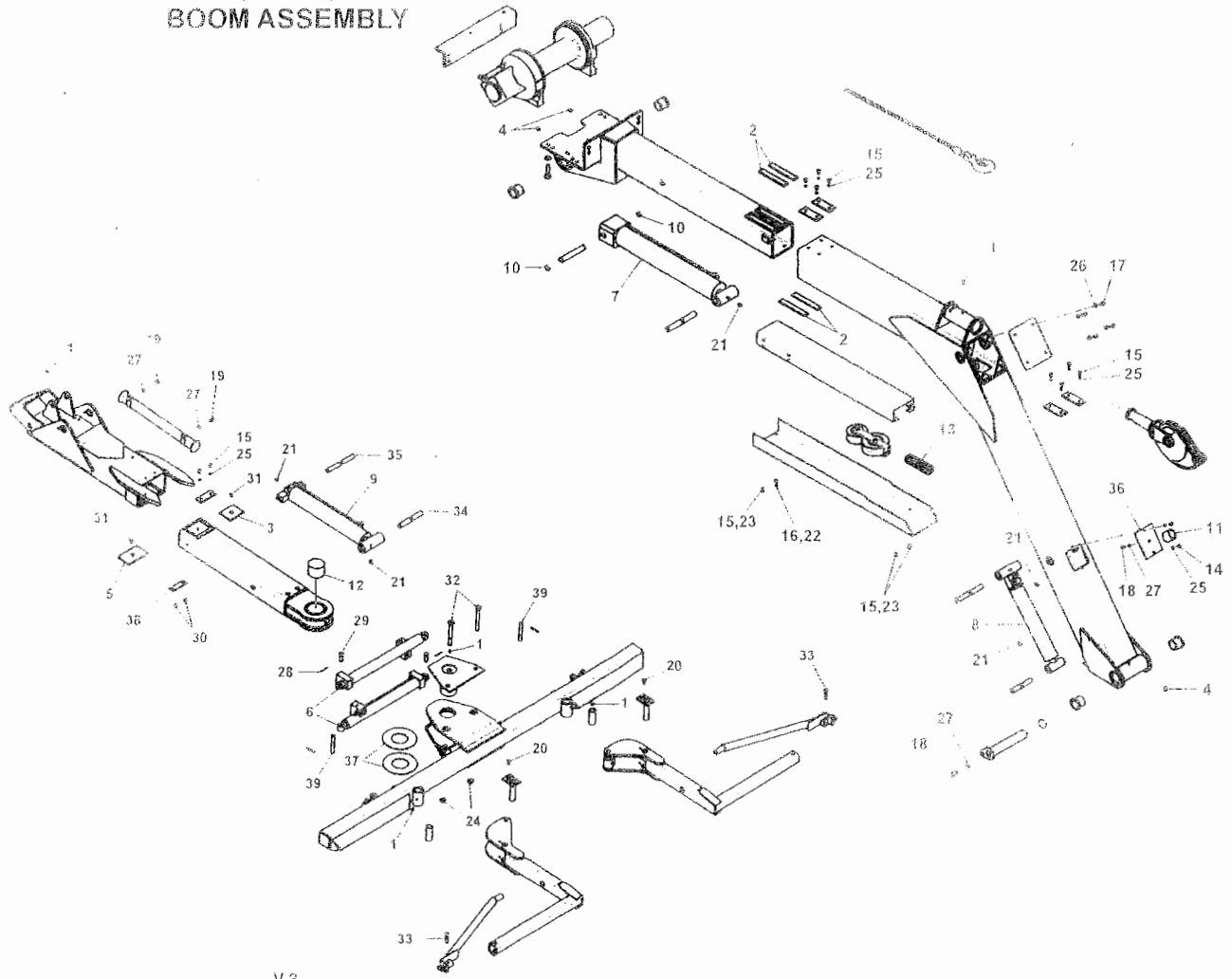
Section V - PARTS (cont'd)

COMPOSITE SIDES



REF	PART #	DESCRIPTION	QPU
1	OUT-V2-#1	COMPOSITE SIDE- LEFT	1
2	OUT-V2-#2	COMPOSITE SIDE- RIGHT	1
3	OUT-V2-#3	FILTER ACCESS PANEL	1
4	OUT-V2-#4	DOOR- LEFT	1
5	OUT-V2-#5	DOOR- RIGHT	1
6	OUT-V2-#6	PADDLE LATCH	2
7	OUT-V2-#7	DOOR HINGE ASSEMBLY	2
8	OUT-V2-#8	ROUND MARKER LIGHT- AMBER	2
9	OUT-V2-#9	ROUND MARKER LIGHT- RED	2
10	OUT-V2-#10	ROUND MARKER LIGHT GROMMET	4
11	OUT-V2-#11	STOP, TAIL, TURN SIGNAL LIGHT	2
12	OUT-V2-#12	BACKUP LIGHT	2
13	OUT-V2-#13	TAIL LIGHT GROMMET	4
14	OUT-V2-#14	MUDFLAP	2
15	OUT-V2-#15	MUDFLAP MOUNTING BRACKET	2

Section V - PARTS (cont'd)
BOOM ASSEMBLY



V-3

Section V - PARTS (cont'd)
BOOM ASSEMBLY (cont'd)

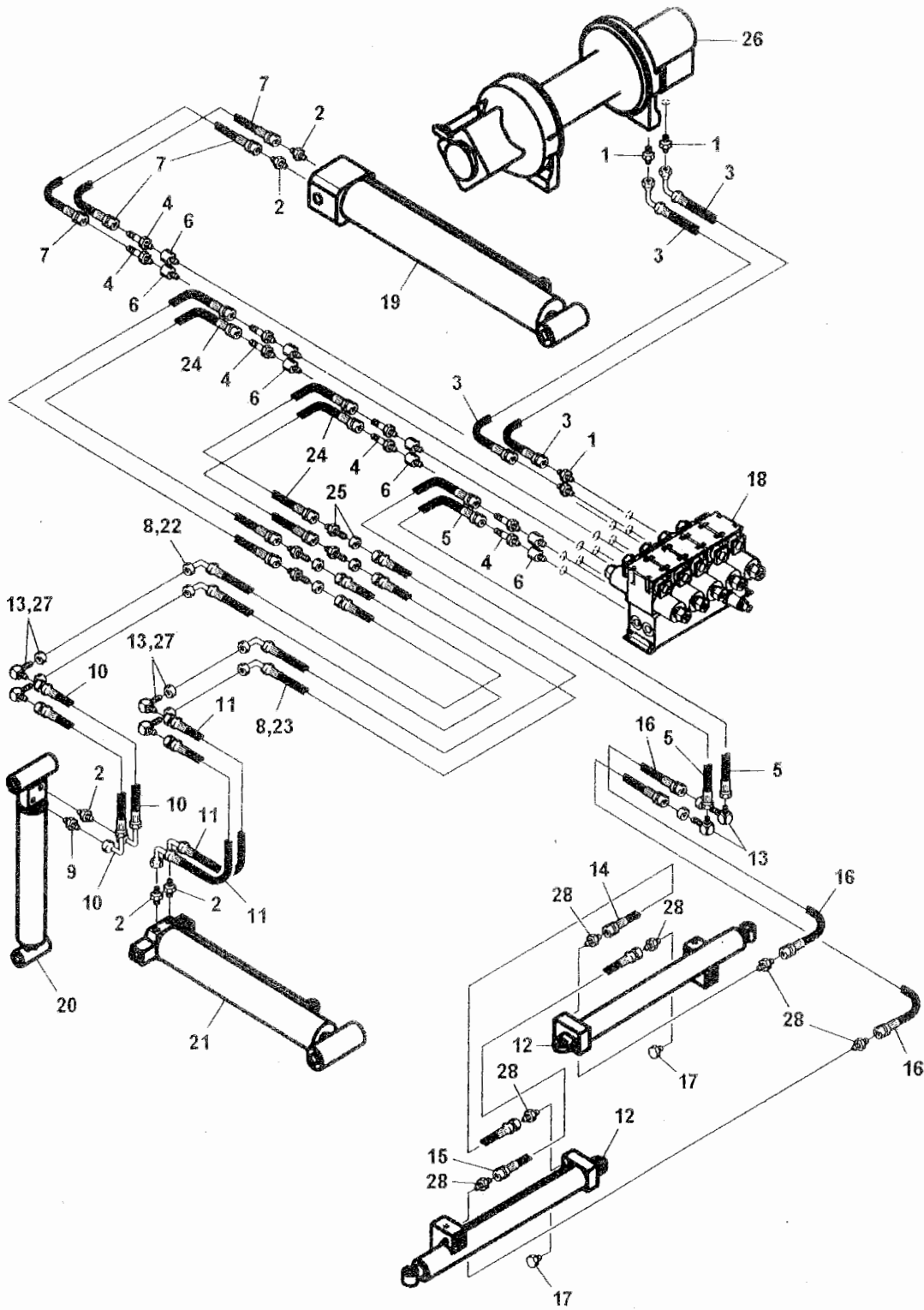
REF	PART #	DESCRIPTION	QPU
1	OUT-V4-#1	GREASE FITTING, 1/4"-28	5
2	OUT-V4-#2	BEARING PAD, BOOM	4
3	OUT-V4-#3	SLIDE PAD, NYLATRON	1
4	OUT-V4-#4	GREASE FITTING, 1/8"	3
5	OUT-V4-#5	SLIDE PAD, NYLATRON	1
6	OUT-V4-#6	CYLINDER, SWING L-ARM	2
7	OUT-V4-#7	CYLINDER, BOOM ELEVATION	1
8	OUT-V4-#8	CYLINDER, WHEEL LIFT FOLD	1
9	OUT-V4-#9	CYLINDER, WHEEL LIFT EXTEND	1
10	OUT-V4-#10	SNAP RING, 7/8" EXT	1
11	OUT-V4-#11	SPRING, TIMBREN 2-7/8"	1
12	OUT-V4-#12	BUSHING, ALUMINUM BRONZE	1
13	OUT-V4-#13	SPRING, HOSE TENSION	1
14	OUT-V4-#14	SCREW, 1/4"-20 X 5/8" HED HD CAP	2
15	OUT-V4-#15	SCREW, 1/4"-20 X 1/2" HED HD CAP	16
16	OUT-V4-#16	SCREW, 1/4"-20 X 3/4" HED HD CAP	1
17	OUT-V4-#17	SCREW, 5/16"-18 X 3/4" HED HD CAP	5
18	OUT-V4-#18	SCREW, 3/8"-16 X 7/8" HED HD CAP	2
19	OUT-V4-#19	SCREW, 3/8"-16 X 1/2" HED HD CAP	2
20	OUT-V4-#20	SCREW, 3/8"-16 X 3/4" HED HD CAP	2
21	OUT-V4-#21	SCREW, 3/8" X 1/2" ALLEN HD CAP	5
22	OUT-V4-#22	NUT, 1/4"-20 HEX NYLOK	1
23	OUT-V4-#23	NUT, 1/4" "J" TINNEMAN	3
24	OUT-V4-#24	NUT, 5/8"-11 HEX FLEXLOC	2
25	OUT-V4-#25	LOCKWASHER, 1/4" HELICAL	12
26	OUT-V4-#26	LOCKWASHER, 5/16" HELICAL SS	5
27	OUT-V4-#27	LOCKWASHER, 3/8" HELICAL SS	3
28	OUT-V4-#28	COTTER PIN, 1/8" X 1-1/4"	2
29	OUT-V4-#29	CLEVIS PIN, 5/8" X 1-1/4"	2
30	OUT-V4-#30	SCREW, 1/4"-20 X 1/2" SKT FL HD	2
31	OUT-V4-#31	SCREW, 1/4"-20 X 1/2" SKT BUTTON HD	2
32	OUT-V4-#32	BOLT, PIVOT PIN	2
33	OUT-V4-#33	SCREW, 1/2"-13 X 1" HEX HD CAP	2
34	OUT-V4-#34	SHAFT, INNER TUBE CYLINDER	1
35	OUT-V4-#35	SHAFT, EXTEND CYLINDER	1
36	OUT-V4-#36	PLATE, COVER-BOOM UPPER	1
37	OUT-V4-#37	THRUST WASHER	2
38	OUT-V4-#38	STOP PAD	1
39	OUT-V4-#39	CYLINDER PIN, L-ARM END	2
40	OUT-V4-#40	PLATE, OUTER W/L BOOM STOP	5
41	OUT-V4-#41	PLATE, BOOM END COVER	1
42	OUT-V4-#42	PIN, BOOM ELEVATION CYL @ INNER BOOM	1
43	OUT-V4-#43	PIN, BOOM ELEVATION CYL @ OUTER BOOM	1
44	OUT-V4-#44	PIN, FOLD CYL @ TOWER	1
45	OUT-V4-#45	PIN, FOLD CYL @ U/L	1

Section V - PARTS (cont'd)
BOOM ASSEMBLY (cont'd)

REF	PART #	DESCRIPTION	QPU
46	OUT-V4-#46	COVER, HOSE TRACK	1
47	OUT-V4-#47	L-ARM WELDMENT, LEFT	1
48	OUT-V4-#48	L-ARM WELDMENT, RIGHT	1
49	OUT-V4-#49	PIN WELDMENT, SWING L-ARM	2
50	OUT-V4-#50	PIVOT PIN WELDMENT	1
51	OUT-V4-#51	CROSSBAR WELDMENT	1
52	OUT-V4-#52	TIRE ADAPTER WELDMENT	2
53	OUT-V4-#53	OUTER MAIN BOOM/TOWER WELDMENT	1
54	OUT-V4-#54	INNER MAIN BOOM WELDMENT	1
55	OUT-V4-#55	OUTER UNDERLIFT BOOM WELDMENT	1
56	OUT-V4-#56	INNER UNDERLIFT BOOM WELDMENT	1
57	OUT-V4-#57	PIN WELDMENT - W/L PIVOT	1
58	OUT-V4-#58	HOSE PULLEY WELDMENT	1
59	OUT-V4-#59	CHANNEL WELDMENT, HOSE TRACK	1
60	OUT-V4-#60	HOSE TUBE WELDMENT	1
61	OUT-V4-#61	FLANGE BEARING	4
62	OUT-V4-#62	RETAINING RING, 1-1/2"	1
63	OUT-V4-#63	BEARING	2
64	OUT-V4-#64	SPRING PIN 1/4" X 1-3/4"	2
65	OUT-V4-#65	TIE DOWN STRAP ASSEMBLY (NOT SHOWN)	2
	OUT-V4-#65A	STRAP, 8' WITH SLEEVE AND HOOK	1
	OUT-V4-#65B	RATCHET ASSEMBLY WITH HOOK	1
		401 ONLY	
66	OUT-V4-#66	WIRE ROPE, 3/8X6X19 IPS	1
67	OUT-V4-#67	WINCH, 8K PLANETARY	1
68	OUT-V4-#68	SCREW, 1/2"-13 X 1-1/4" HED HD CAP	8
69	OUT-V4-#69	LOCKWASHER, 1/2" HELICAL	8
70	OUT-V4-#70	UNIVERSAL BOOM END SWIVEL	1
71	OUT-V4-#71	LEVEL WINDER (NOT SHOWN)	1
72	OUT-V4-#72	TENSIONER MOUNTING ANGLE	1

Section V - PARTS (cont'd)

BOOM HYDRAULICS



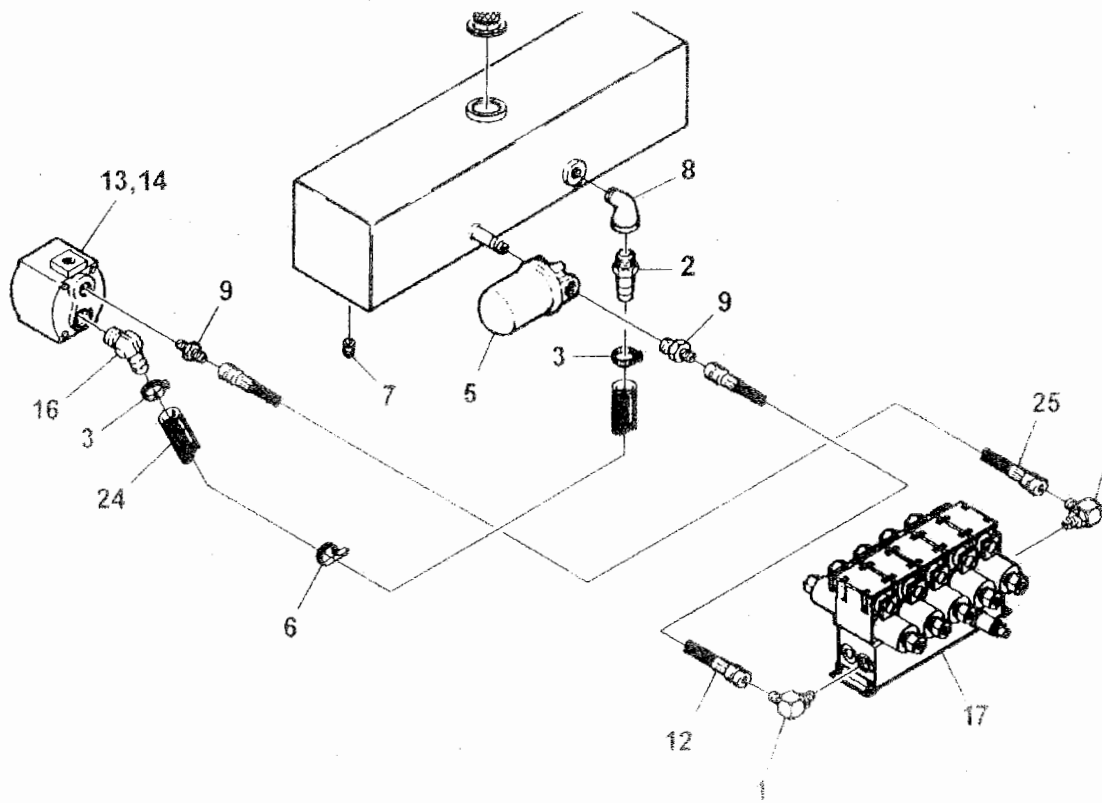
Section VI - PARTS (cont'd)

BOOM HYDRAULICS

REF	PART #	DESCRIPTION	QPU
1	OUT-V6-#1	CONNECTOR, 8MJ-8MB (401 ONLY)	4
2	OUT-V6-#2	CONNECTOR, 6MJ-6MB	5
3	OUT-V6-#3	HOSE ASSEMBLY, 84" (401 ONLY)	2
4	OUT-V6-#4	CONNECTOR, 6MJ-6MBL	8
5	OUT-V6-#5	HOSE ASSEMBLY, 75"	2
6	OUT-V6-#6	CONNECTOR, 8MB-6FB	8
7	OUT-V6-#7	HOSE ASSEMBLY, 75"	2
8	OUT-V6-#8	SKUFF JACKET, BLACK	4 FT.
9	OUT-V6-#9	ORIFICE FITTING, 6MJ-6MB-1/32	1
10	OUT-V6-#10	HOSE ASSEMBLY, 67"	2
11	OUT-V6-#11	HOSE ASSEMBLY, 102-1/2"	2
12	OUT-V6-#12	CYLINDER, SWING L-ARM	2
13	OUT-V6-#13	ELBOW, 4MJ-BULKHEAD 90 W/ NUT	6
14	OUT-V6-#14	HOSE ASSEMBLY, 10-3/4"	1
15	OUT-V6-#15	HOSE ASSEMBLY, 17"	1
16	OUT-V6-#16	HOSE ASSEMBLY, 112"	2
17	OUT-V6-#17	PLUG, 4MB	2
18	OUT-V6-#18	SOLENOID VALVE, 5 SPOOL (401)	1
	OUT-V6-#18A	SOLENOID VALVE, 4 SPOOL (400 NO WINCH)	1
19	OUT-V6-#19	CYLINDER, BOOM ELEVATION	1
20	OUT-V6-#20	CYLINDER, WHEEL LIFT FOLD	1
21	OUT-V6-#21	CYLINDER, WHEEL LIFT EXTEND	1
22	OUT-V6-#22	HOSE ASSEMBLY, 48"	2
23	OUT-V6-#23	HOSE ASSEMBLY, 52"	2
24	OUT-V6-#24	HOSE ASSEMBLY, 60"	4
25	OUT-V6-#25	BULKHEAD UNION W/ NUT	4
26	OUT-V6-#26	WINCH, 8K PLANETARY (401 ONLY)	1
27	OUT-V6-#27	LOCKWASHER, 7/16" HELICAL	4
28	OUT-V6-#28	CONNECTOR 4MJ-4MB	6

Section VI - PARTS (cont'd)

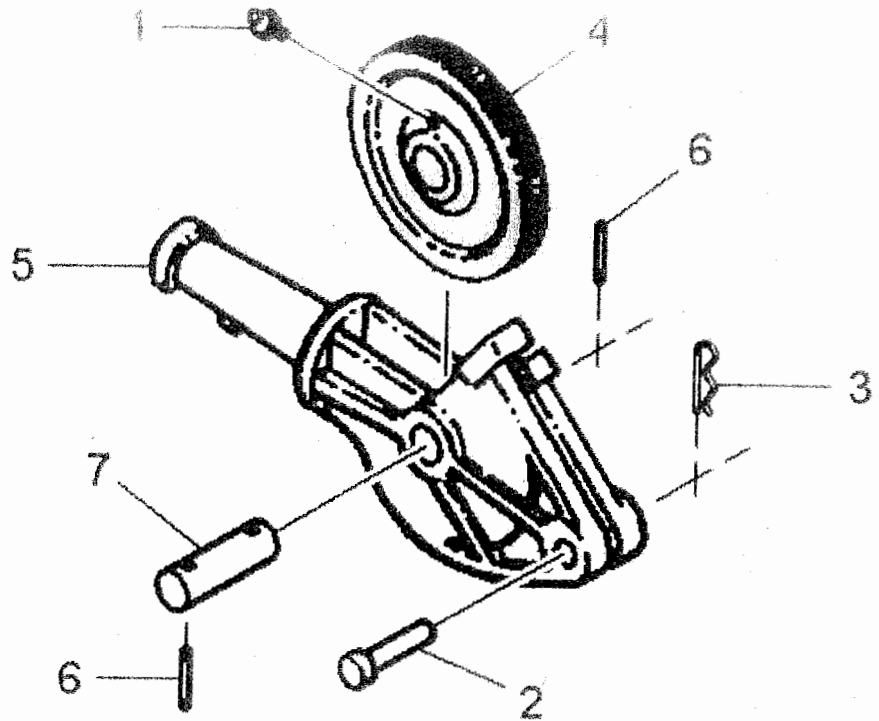
PUMP, VALVE AND FILTER HYDRAULICS



Section V - PARTS (cont'd)
PUMP, VALVE AND FILTER HYDRAULICS

REF	PART #	DESCRIPTION	QPU
1	OUT-V8-#1	ELBOW, 8MJ-10MB90	2
2	OUT-V8-#2	BARB, 16C4-16MP	1
3	OUT-V8-#3	HOSE CLAMP, 1"	3
4	OUT-V8-#4	CABLE TIE, 15-1/4"	5
5	OUT-V8-#5	RETURN LINE FILTER ASSEMBLY	1
6	OUT-V8-#6	HOSE CLAMP, 1-1/2" INSULATED	1
7	OUT-V8-#7	PIPE PLUG, 3/4" MALE	1
8	OUT-V8-#8	STREET ELBOW, 1"90 DEG	1
9	OUT-V8-#9	CONNECTOR, 8MJ-12MP	2
10	OUT-V8-#10	HOSE CLAMP, 5/8" INSULATED	3
11	OUT-V8-#11	SKUFF JACKET, 1-1/2" DIA BLACK	8 FT
12	OUT-V8-#12	HOSE ASSEMBLY, 42"	1
13	OUT-V8-#13	HYDRAULIC CLUTCH PUMP	1
14	OUT-V8-#14	CLUTCH PUMP MOUNTING KIT	1
15	OUT-V8-#15	FILLER CAP ASSEMBLY	1
16	OUT-V8-#16	BARB, 16C4-20MP45	1
17	OUT-V8-#17	SOLENOID VALVE, 5 SPOOL (401)	1
	OUT-V8-#17A	SOLENOID VALVE, 4 SPOOL (400 NO WINCH)	1
18	OUT-V8-#V18	5 SWITCH REMOTE ASSEMBLY (401)	1
	OUT-V8-#18A	4 SWITCH REMOTE ASSEMBLY (400 NO WINCH)	1
19	OUT-V8-#19	GROUND HARNESS, 10 WIRE	1
20	OUT-V8-#20	SCREW, #10-32 X 1/2" RD HD PHILLIPS	6
21	OUT-V8-#21	SCREW, 1/4"-20 X 1" HED HD CAP	4
22	OUT-V8-#22	NUT, 1/4"-20 HEX NYLOK	4
23	OUT-V8-#23	WASHER, 1/4" FLAT	8
24	OUT-V8-#24	SUCTION HOSE, 1" X 12	1
25	OUT-V8-#25	HOSE ASSEMBLY, 185"	1

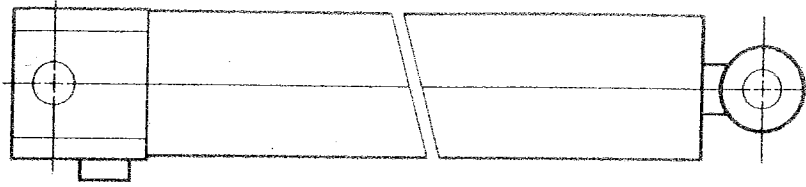
Section V - PARTS (cont'd)
BOOM SWIVEL ASSEMBLY



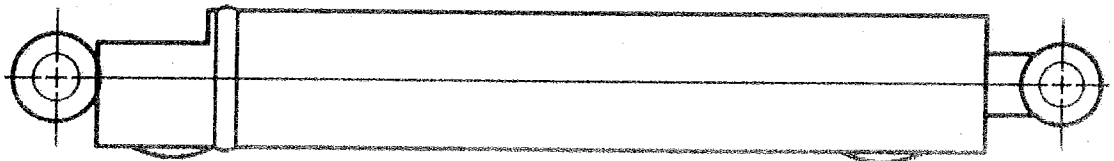
REF	PART #	DESCRIPTION	QPU
1	OUT-V9-#1	GREASE FITTING, 1/4"-28 STR	1
2	OUT-V9-#2	CLEVIS PIN, 1/2" SS	1
3	OUT-V9-#3	HAIRPIN, 1-15/16"	2
4	OUT-V9-#4	BOOM SHEAVE WHEEL	1
5	OUT-V9-#5	YOKE BOOM SHEAVE	1
6	OUT-V9-#6	ROLL PIN 3/16" X 2"	2
7	OUT-V9-#7	SHEAVE SHAFT	1

Section V - PARTS (cont'd)

HYDRAULIC CYLINDERS



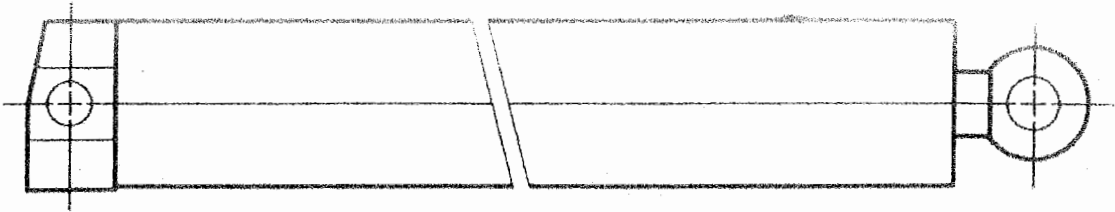
REF	PART #	DESCRIPTION	QPU
1	OUT-V10-#1	BOOM ELEVATION CYLINDER	1



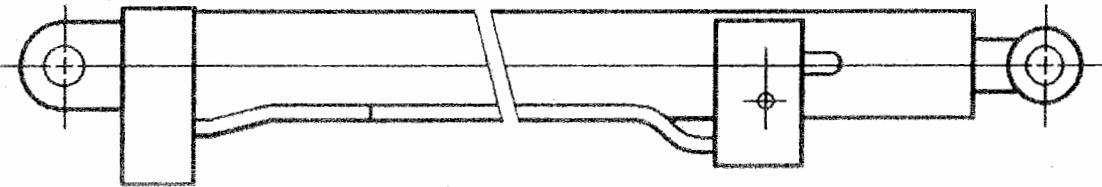
REF	PART #	DESCRIPTION	QPU
1	OUT-V10-#1A	WHEEL LIFT FOLD CYLINDER	1

Section V - PARTS (cont'd)

HYDRAULIC CYLINDERS



REF	PART #	DESCRIPTION	QPU
1	OUT-V11-#1	WHEEL LIFT EXTEND CYLINDER	1



REF	PART #	DESCRIPTION	QPU
1	OUT-V11-#1A	SWING L-ARM CYLINDER (COMPLETE)	1